



## Texas T Parts

711 Ashford Hills Drive  
Bryan, Texas 77801

(979) 260-5433 1-800-337-6977  
Fax (979) 260-1214  
www.TexasTParts.com

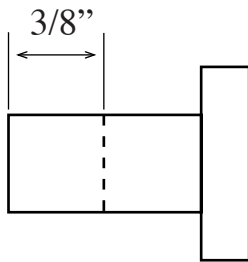
Note our  
**New Address**  
Everything else  
remains the same.



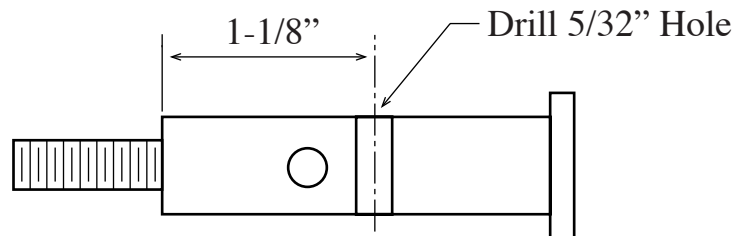
### '16-'19 Ball Bearing Fan Hub Cartridge Instructions Item# T3962-BC

**Note: Please read completely through the instructions before starting.**

1. Drive out the old bushings. It's easier if you start with the rear one first. Clean up the inside of the fan hub thoroughly. Also clean the shaft and front bushing.
  - 1a. Remove the fan hub from the car. (HA! Just checking to see if you were paying attention!)
2. Cut the front bushing as shown below and drill a hole in the shaft for the roll pin as also shown below.
3. Install the short piece of bushing back into the front of the hub as shown below. This will help align the bearing cartridge when it is being installed. Also, make sure the shaft slides through the bearing cartridge and the piece of cut-off bushing easily, and that the bearing cartridge fits easily into the hub, except for the last 1/4".

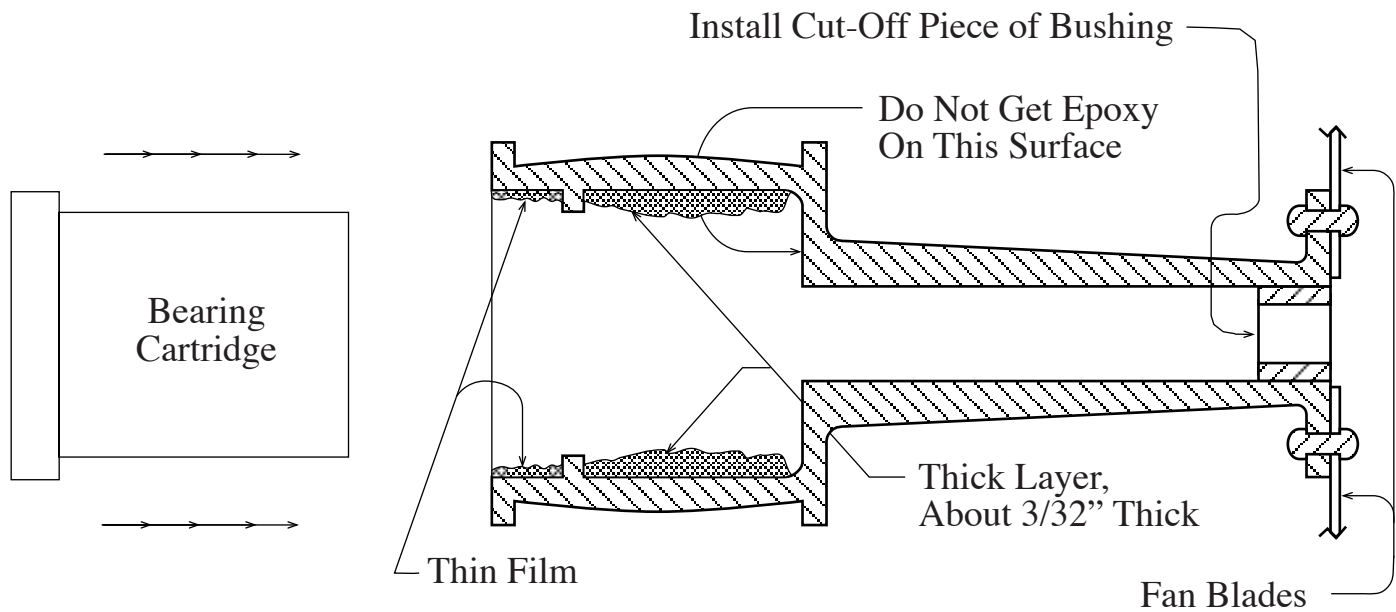


Small Front Bushing



Fan Shaft

4. Clean the outside of the bearing cartridge and the inside of the fan hub with contact cleaner or lacquer thinner.
5. Mix up enough "J.B. Weld" (a good quality epoxy available at most auto parts stores) to coat the inside of the fan hub as shown below
6. In a timely manner, install the shaft into the fan hub from the front and place the assembly, blade side down, on the workbench to hold the shaft in place. The shaft will insure proper alignment of the bearing cartridge.
7. Slide the bearing cartridge over the shaft and into the hub, turning it as you go, and keeping it centered as best as you can. It may need to be pressed in the last 1/4". The end of the bearing cartridge should be left flush with the end of the fan hub. If no press is available, it can be pulled in, using a piece of 1/2" all-thread and 3 fender washers stacked (the washers need to be larger than the bearing cartridge).



8. With the bearing cartridge installed, immediately set the fan hub pulley side down. Leave the fan hub in this position for about 4 hours. This will allow the epoxy to puddle around the bearing cartridge before it gets hard. **WAIT A TOTAL OF 12 HOURS BEFORE USING THE FAN HUB.**
9. After the epoxy has set, the piece of bushing you installed in the front of the fan hub needs to be driven out. Install the roll pin and center it in the shaft. The pin will maintain the proper bearing location on the shaft.
10. Install the shaft in the fan hub and install the fan back on the arm, being careful not to overtighten the shaft. Use the original grease cup/nut to lock the shaft, and you're done.

If you like our product, tell your friends. If you have a question or a problem, let us know.

Thanks and Smooth Running,

#### LIMITED WARRANTY

Texas 'T' Parts will repair or replace any part that we manufacture, for a period of 90 days from the date of purchase, that wears out or breaks.

Since we don't install parts, the part must be installed on the type of individually owned and operated passenger vehicle for which it is designed. Of course, we cannot replace a part whose failure was caused by another faulty part, low fluid, or other abuse.

Return any part directly to us, along with a copy of the sales receipt showing the date of purchase, and \$5 to cover shipping & handling. Do not return parts to your dealer.

TEXAS 'T' PARTS